

There's so much more to Brainboxes

To enjoy the full benefits of Brainboxes, contact

UK - Brainboxes Ltd. 18 Hurricane Drive,  
Liverpool International Business Park  
Liverpool,  
L24 8RL, UK

t. +44 (0)151 220 2500  
f. +44 (0)151 252 0446  
e. sales@brainboxes.com  
w. www.brainboxes.com

USA - TollFree. +1 888 958 5538

Japan - Brainboxes Japan. 1-2-8 Shinjyuku,  
Shinjyuku-ku, Tokyo, 160-0022 Japan,

t. +81-3-3833-2500

or visit [www.brainboxes.com](http://www.brainboxes.com)

For a full list of our Global distributors and resellers visit: [www.brainboxes.com/where-to-buy](http://www.brainboxes.com/where-to-buy)

### From product design to application - a fit and forget solution

#### Ethernet to Serial



#### USB to Serial



#### Bluetooth



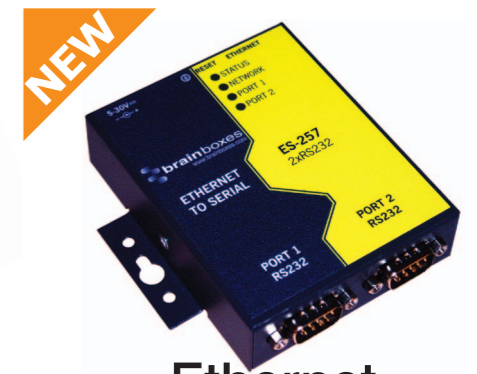
#### uPCI



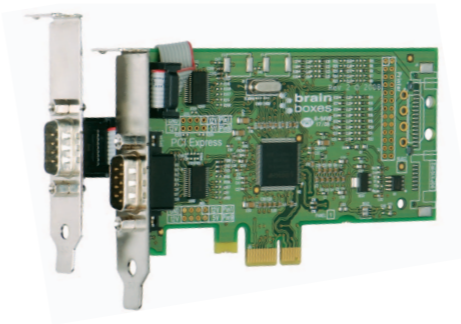
USB to Serial Industrial



USB to Serial Desktop



Ethernet to Serial



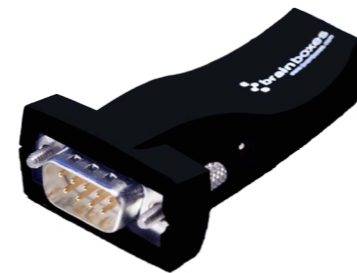
PCI Express



ExpressCard



uPCI



Bluetooth



PCMCIA



Signed drivers for all ranges



Connect, Configure, Control  
Your Serial Devices

## USB to Serial Devices

## Network Devices

## Desktop & Server

## Laptop

### Industrial USB to Serial

Our industrial devices are stylish enough for the desktop and rugged enough for industry with functionality and performance for even the most demanding applications. Our software has been proven in a wide range of industrial applications and has passed where competitors failed.

Being hot swappable these plug & play devices makes USB a very attractive way to add serial connectivity to your PC and ideal for notebooks and laptops that only have USB connectivity options. Instantly adding extra serial ports when required!



- Range Features**
- Includes 1m USB cable
  - High retention USB connector for secure connections
  - Plug & Play
  - Fit any USB port
  - Proven, robust software for excellent application compatibility
  - Rugged metal enclosure
  - Accessories available

### Ethernet to Serial

Ethernet to Serial device servers provide connectivity to serial devices via the network. Allowing control & monitoring of connected devices remotely and over the web.

Boost.Lan drivers for Windows users creating local COM ports, Web config and RFC2217 compliant interface for non-Windows users.



- Range Features**
- 10/100Base TX Ethernet port
  - User friendly software
  - Power input 5-30V DC
  - LED status indication
  - Rugged metal enclosure with integrated wall mount
  - Optional DIN rail mounting kit

### Bluetooth to Serial

Brainboxes Bluetooth converters are simple and easy to use and can be up and running within minutes. With 3-wire operation, integral antenna, and the option to configure as a pair for true cable replacement, these devices are an engineers dream.



- Range Features**
- Requires no software
  - Plug directly onto RS232 port for instant connection
  - Intuitive config utility supplied for Windows & Linux
  - Retain settings when powered down
  - Can be powered from pin 9 of the peripheral
  - Available as PC & device connectivity

### PCI Express RS232

PCI Express is the next generation of connectivity standard within PCs and servers. It is based on the current PCI bus, but is faster and requires less power. PCI Express (PCIe) slots are already replacing PCI slots within PCs and servers.

Brainboxes PX products ensure a smooth transition for customers from PCI to PCIe.

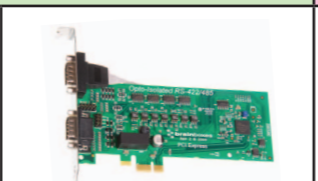


- Range Features**
- FIFO buffer per port: 256 byte (1-4 ports), 32byte (8 ports)
  - CE/FCC Compliant
  - Plug & Play - auto configuring of interrupt and address

### PCI Express RS422/485

PCI Express is the next generation of connectivity standard within PCs and servers. It is based on the current PCI bus, but is faster and requires less power. PCI Express (PCIe) slots are already replacing PCI slots within PCs and servers.

Brainboxes PX products ensure a smooth transition for customers from PCI to PCIe.

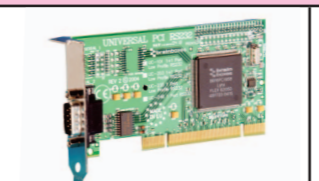


- Range Features**
- FIFO buffer per port: 256 byte (1-4 ports), 32 byte (8 ports)
  - CE/FCC Compliant
  - Plug & Play - auto configuring of interrupt and address
  - RS422/485 Specific:
    - Configurable as full or half duplex
    - Hardware autogating for guaranteed no data loss in half duplex cabling systems

### uPCI RS232 & Powered RS232

Our universal PCI cards are compatible with both 5V and 3.3V slots.

Brainboxes manufacture an extensive range of PCI cards with 1 to 8 ports, RS232 or RS422/485, low profile or standard height, and with or without cables. PCI cards are plug & play, fit internally to the PC and give the most secure add on solution for permanent installations.

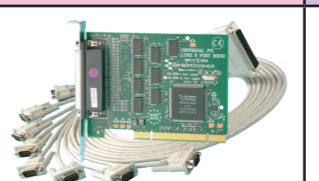


- Range Features**
- Universal PCI (3.3V & 5V)
  - FIFO buffer per port: 128 byte (1 & 2 ports), 64 byte (4 ports)
  - CE/FCC Compliant
  - Plug & Play - auto configuring of interrupt and address

### uPCI Opto Isolated & RS422/485

Our universal PCI cards are compatible with both 5V and 3.3V slots.

Brainboxes manufacture an extensive range of PCI cards with 1 to 8 ports, RS232 or RS422/485, low profile or standard height, and with or without cables. PCI cards are plug & play, fit internally to the PC and give the most secure add on solution for permanent installations.



- Range Features**
- Configurable as full or half duplex
  - Hardware autogating - guaranteed no data loss in half duplex cabling systems
  - Transient spike protection
  - Terminating resistors for fail safe open/short circuit protection
  - Opto-isolation ±1500V DC/1000V AC

### ExpressCard

ExpressCard slots are replacing PCMCIA slots in laptops. These RS232 & RS422/485 products are hot swappable, allowing the PC to stay active when expansion options are added or removed, ensuring minimum impact to the user.



- Range Features**
- FIFO buffer per port: 128 byte
  - CE/FCC Compliant
  - Plug & Play - auto config of interrupt and address
  - Use in tablet, desktop & laptop
  - RS422/485 Specific:
    - Configurable as full or half duplex
    - Hardware autogating for guaranteed no data loss in half duplex cabling systems

### PCMCIA

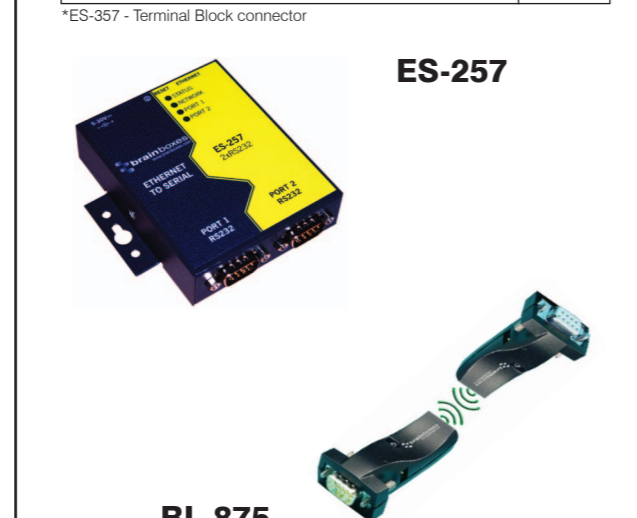
Brainboxes PCMCIA cards are designed to take full advantage of improved mobile processing power. These products are based on Brainboxes' high performance custom chip. Ensuring all the features of PCI cards. Allows you to use your laptop as a true desktop replacement.



- Range Features**
- FIFO buffer per port: 128 byte
  - CE/FCC approved
  - Plug & Play - auto config of interrupt and address
  - Use in tablet, desktop, laptop, and Pocket PCs
  - Option of secured or removable cables
  - Type II PCMCIA
  - RS422/485 features (see ExpressCard)

USB TO SERIAL	
Industrial USB Devices	CODE
USB 2 PORT RS232 1MBaud	US-257
USB 4 PORT RS232 1MBaud	US-701
USB 8 PORT RS232 1MBaud	US-279
USB 2 PORT RS422/485 1MBaud	US-313
USB 4 PORT RS422/485 1MBaud	US-346
USB 8 PORT RS422/485 1MBaud	US-842
Desktop & Laboratory USB Devices	
USB 1 PORT RS232	US-101
USB 1 PORT RS422/485	US-324

NETWORK DEVICES	
Ethernet to Serial Devices	CODE
ETHERNET 1 PORT RS232	ES-246
ETHERNET 1 PORT RS422/485	ES-320
ETHERNET 1 PORT RS232 & 1 PORT RS422/485*	ES-357
ETHERNET 2 PORT RS232	ES-257
ETHERNET 2 PORT RS422/485	ES-313
ETHERNET 4 PORT RS232	ES-701
ETHERNET 4 PORT RS422/485	ES-346
ETHERNET 8 PORT RS232	ES-279
ETHERNET 8 PORT RS422/485	ES-842
Bluetooth Devices	
BLUETOOTH 1 PORT RS232 CONVERTER MALE DTE	BL-819
BLUETOOTH 1 PORT RS232 CONVERTER FEMALE DTE	BL-830
BLUETOOTH 2 PORT RS232 PAIRED DEVICE	BL-875



DESKTOP & SERVER CARDS		
PCIe RS232 Cards	STD CODE	LP CODE
PCIe 1xLPT	PX-146	PX-157
PCIe 1xLPT + 1xRS232 1MBaud	PX-475	
PCIe 1xRS232 1MBaud	PX-246	PX-235
PCIe 2xRS232 1MBaud	PX-257	PX-101
PCIe 2xRS232 + 1xLPT 1MBaud		PX-203
PCIe 3xRS232 1MBaud	PX-431	
PCIe 3 + 1xRS232 1MBaud	PX-420	
PCIe 4xRS232 1MBaud	PX-701	PX-260
PCIe 8xRS232 1MBaud	PX-279	
PCIe 8xRS232 DB25 1MBaud	PX-275	
PCIe RS422/485 Cards		
PCIe 1xRS422/485 1MBaud	PX-324	PX-320
PCIe 1xRS422/485 Opto Isolated 1MBaud	PX-387	PX-376
PCIe 2xRS422/485 1MBaud	PX-313	
PCIe 2xRS422/485 Opto Isolated 1MBaud	PX-310	
PCIe 4xRS422/485 1MBaud	PX-346	PX-335
PCIe 4xRS422/485 Opto Isolated 1MBaud	PX-368	
PCIe Powered Cards		
PCIe 1xRS232 POS 1A SATA	PX-846	PX-803
PCIe 1 + 1xRS232 POS 1A SATA		PX-801
PCIe 1xRS232 POS 1A DISKCONN	PX-823	PX-812
PCIe 1 + 1xRS232 POS 1A DISKCONN		PX-809
PCIe 2xRS232 POS 1A		PX-857



DESKTOP & SERVER CARDS		
PCI RS232 CARDS	STD CODE	LP CODE
uPCI 1xLPT	UC-146	UC-157
uPCI 1xRS232 + 1xLPT	UC-475	UC-464
uPCI 1xRS232	UC-246	UC-235
uPCI 1 + 1xRS232		UC-101
uPCI 1 + 1xRS232 + 1xLPT		UC-203
uPCI 2xRS232	UC-257	UC-253
uPCI 2xRS232		UC-734
uPCI 2xRS232 1MBaud		UC-302
uPCI 2xRS232 230K		UC-607
uPCI 2xRS232 + 1xLPT		UC-203
uPCI 3xRS232		UC-431
uPCI 3 + 1xRS232		UC-420
uPCI 3 + 1xRS232 + 1xLPT		UC-414
uPCI 4xRS232	UC-268	UC-260
uPCI 4xRS232		UC-701
uPCI 4xRS232 DB25	UC-265	UC-271
uPCI 4xRS232 DB25	UC-756	
uPCI 4xRS232 + 1xLPT	UC-295	UC-263
uPCI 4xRS232 Opto Isolated TX RX	UC-072	UC-049
uPCI 4xRS232 Opto Isolated TX RX CTS RTS	UC-083	UC-061
uPCI 8xRS232	UC-279	
uPCI 8xRS232 DB25	UC-275	
Powered PCI RS232		
uPCI 2xRS232 POS 0.5A	UP-869	
uPCI 2xRS232 POS 1.A	UP-880	
PCI RS422/485 Cards		
uPCI 1xRS422/485 1MBaud	UC-324	UC-320
uPCI 1xRS232 + 1xRS422/485	UC-357	
uPCI 2xRS422/485 1MBaud	UC-313	
uPCI 2xRS422/485 1MBaud Opto Isolated	UC-310	
uPCI 4xRS422/485 1MBaud	UC-346	
uPCI 4xRS422/485 1MBaud Opto Isolated	UC-368	
uPCI 2xRS422/485 18MBaud	CC-525	
uPCI 2xRS422/485 15MBaud	CC-530	

LAPTOP CARDS	
EXPRESSCARD SERIAL	CODE
EXPRESSCARD 1 PORT RS232	VX-001
EXPRESSCARD 2 PORT RS232	VX-012
EXPRESSCARD 1 PORT RS422/485	VX-023
EXPRESSCARD 2 PORT RS422/485	VX-034
PCMCIA TO EXPRESSCARD ADAPTOR	PM-200
EXPRESSCARD 54mm SPACER	VX-056
EXPRESSCARD PCIe SERIAL	
EXPRESSCARD 1 PRINTER PORT	XC-157
EXPRESSCARD PCIe 1 PORT RS232	XC-235
EXPRESSCARD 1 PRINTER PORT + 1 PORT RS232	XC-475
PCMCIA SERIAL	
PCMCIA - Removable Cables	
PCMCIA 1 PORT RS232	PM-020
PCMCIA 2 PORT RS232	PM-010
PCMCIA 1 PORT RS422/485	PM-120
PCMCIA 2 PORT RS422/485	PM-121
PCMCIA - Secured Cables	
PCMCIA 1 PORT RS232 RUGGED 1MBaud	PM-143
PCMCIA 2 PORT RS232 RUGGED 1MBaud	PM-132
PCMCIA 1 PORT RS422/485 RUGGED 1MBaud	PM-154

